



# 2023-2024 Call for Awards

Professional, Student &  
Non-Juried Awards

*St. Louis Chapter of the American Society of Landscape Architects*



# Professional Awards

## 2023-2024 Call for Awards

The St. Louis Chapter of the American Society of Landscape Architects seeks to recognize excellence in the diverse practices of landscape architecture. We aim to reflect the careful stewardship, wise planning, functionalism, context, execution and artful design of our cultural and natural environment.

Participation in the awards program helps broaden professional boundaries, increases public awareness of the role of landscape architects, raises the standards of the discipline, and brings recognition to organizations and individuals who demonstrate superior skill in the practice and/or study of landscape architecture.

Design excellence is not dependent upon size, cost or type; each submission will be recognized on its own individual merit. Entries to the St. Louis ASLA Professional Awards will be judged individually, and not in competition with each other.

Please reach out directly for necessary clarifications or with any questions. Good luck!

Sincerely,



Michelle Ohle, ASLA Awards Chair | [stlouisaslaawards@gmail.com](mailto:stlouisaslaawards@gmail.com)

## Professional, Student & Non-Juried Awards

*St. Louis Chapter of the American Society of Landscape Architects*



# Eligibility

To be eligible as an entrant for any category, the entrant must be a Full Professional Member or Fellow of ASLA in good standing, practicing within the Chapter's geographical boundaries.

Entrant must have served as the Landscape Architect of Record on the project they are submitting, and projects must have been prepared under the direct supervision of the entrant.

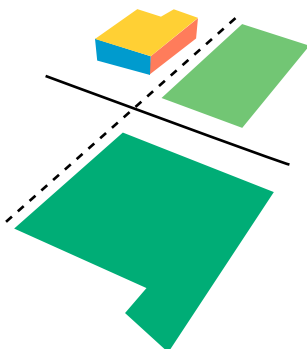
All submissions of work by companies with office locations both in-state and out-of-state must indicate that work performed on a submitted project was primarily performed by chapter members at an office within chapter boundaries.

Project submissions can be for a project site or work effort located anywhere in the world.

Professional work may be resubmitted annually until it wins an award, at which time it becomes ineligible for further submission.

Project construction or completion must have occurred within the last five (5) years, unless otherwise stated.

**Note:** Submissions not in compliance with the requirements will be rejected. Please review submissions carefully for completeness and anonymity. Submission fees are non-refundable unless special circumstances arise.



# Professional Awards

---

## Professional, Student & Non-Juried Awards

*St. Louis Chapter of the American Society of Landscape Architects*

# Submission Rules

**Obtain Client Authorization:** Entrants are responsible for securing written authorization from the Client allowing the entry to be submitted, judged, and published if given an award. Do not send the authorization with your entry; keep it for your records. St. Louis ASLA will assume authorization has been obtained prior to entry into the awards program and will assume no responsibility for any problems that result from failure to obtain this release.

**Designer Anonymity:** To ensure impartiality, delete all references to entrant identity and the firm being represented from all text and images. Submittals not meeting anonymity requirements shall be rejected at the discretion of the ExComm. Pay specific attention to boards, reports, slides, engagement photos, etc.

# Good Practice

**Collaborator Credit:** Submitting entities shall take full responsibility for ensuring proper credit is provided for their project's team collaborators, clients, stakeholders, public agencies, etc. and/or other prior design affiliates that may have been involved in the project's design evolution.

**Photo Credit:** Entrants are responsible for clearing photographs with photographers for publication and reproduction by St. Louis ASLA. St. Louis ASLA will provide proper photography and other project credits when using photos, but will not assume responsibility for any copyright or photography fees.

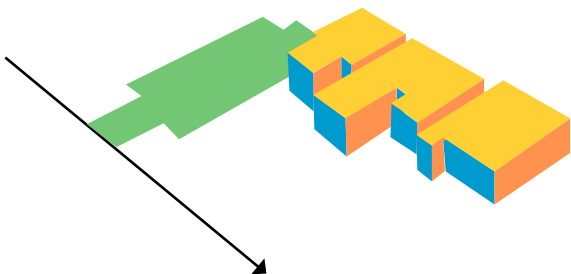
**Note:** St. Louis ASLA encourages ample and generous credit to all engaged on project work. Landscape Architecture is, innately, a profession of partnership.

# Professional Awards

---

## Professional, Student & Non-Juried Awards

*St. Louis Chapter of the American Society of Landscape Architects*



## Successful Entries

After notification of the jury results, award recipients will be sent a request for information for each award certificate and to be used in the preparation of the video. This form will request all names and role of each participant to be recognized at the award ceremony and in publication of award outcomes. Entrants are responsible for all spelling, titles, and information attained and printed on the certificates. Each award-winning entry will receive two award certificates.

Additional award certificates may be ordered through the Awards Chair at an additional cost.

St. Louis ASLA retains the right to publish photos submitted in winning entries on the St. Louis ASLA or ASLA website, in periodicals, journals and/or digital media in promoting the awards program and in other media in conjunction with promoting landscape architecture.

## Entry Fee

Professional Entry Fee: \$120  
Student Entry Fee: \$ 20

\*\*\*See separate instructions for student submission guidelines and timeline

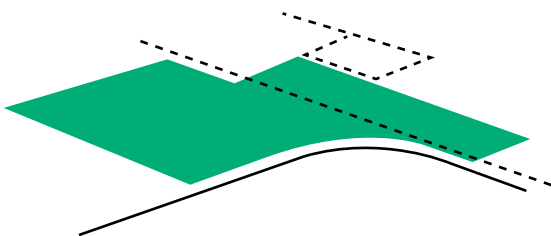
Payment will be due prior to the Submission on the Deadline stated below. Final Payment Procedures will be developed and shared with entrants directly in the coming weeks. Entry Forms are due in order to receive the Digital Upload Link.

# Professional Awards

---

Professional, Student &  
Non-Juried Awards

*St. Louis Chapter of the American Society of Landscape Architects*



# Timeline

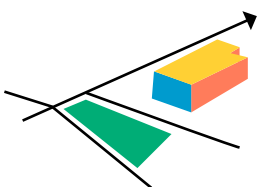
For professional entries to be considered:

**Entry Forms** must be submitted to [stlouisaslaawards@gmail.com](mailto:stlouisaslaawards@gmail.com) by **5:00 p.m., November 20th, 2023** --- A Digital Upload Link will be sent to those who have completed Entry Forms.

**All materials** must be submitted via digital upload on or before **5:00 p.m., December 1st, 2023** --- Payment is due PRIOR to Final Submission Deadline.

Professional Award results are anticipated back from our Jury Chapter about **January 7th, 2024**. The Sierra ASLA Chapter will be reviewing award submissions this year.

The tentative date for the Awards Event is **February 3rd, 2024**. Mark your calendars!



# Professional Awards

---

Professional, Student &  
Non-Juried Awards

*St. Louis Chapter of the American Society of Landscape Architects*

# Submission Elements

In an effort to help expedite the production of the St. Louis Chapter ASLA Awards Brochure and presentation, the following guidelines must be met for all submittals. Failure to follow the format guidelines will result in disqualification.

**1 - Entry Form:** The completed Entry Form must be signed and sealed by the entrant. Contact information for Entrant must be complete and legible. By signature and seal, the Entrant affirms that the information contained in the entry form and submission is true and factual.

\*\*\*Student Entries should use the Student Entry Form, not the Professional Entry form.

**2 - Award Script Description:** The Award Script Description should be a written summary (200 word maximum) to be used during the Awards Presentation and for future marketing publications. (see forms)

**Note:** This will not be judged as part of the award submission. Entry designer anonymity is not necessary in the marketing description since this information will not be shared with the Awards Jury. The Award Script Description is NOT required for Student Entries.

**3 - Project Narrative:** Entries should include a written text (750 word maximum) to describe the following elements:

**Project identification** - Include project title, location, and entry category.

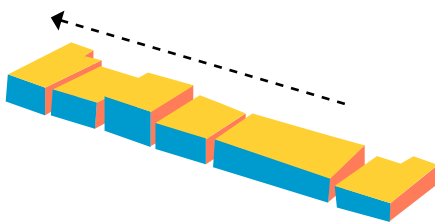
**Project purpose** - Describe the project's requirements, scope, planning or design philosophy, and design intent.

**Role of the landscape architect** - Describe the landscape architect's role of leadership and involvement, along with the role of any collaborating parties, using generic terms such as client, architect, engineer, etc.

# Professional Awards

## Professional, Student & Non-Juried Awards

*St. Louis Chapter of the American Society of Landscape Architects*



# Submission Elements

*Continued*

**Local significance** - Explain the project's effect on public perception of the profession, and the relationship of the project to its context or surroundings, particularly in regards to the profession's stewardship responsibilities.

**Special factors** - Explain why the project is unique, plus any unusual problems encountered or new techniques developed.

This Project Narrative is to aid the jurors in recognizing the unique or special qualities of a project that show excellence in landscape architecture. The text needs to describe the specific roles and contributions of the landscape architect directly involved in the project. Submittals with vague or inadequate information on the role of the landscape architect/designer will be ruled ineligible.

The Project Narrative should be submitted in PDF format (see forms) as well as included on the second page of the Image Submission slideshow. It is due at the time of submission materials, NOT with Entry Form.

**Note:** The project narrative as described above **should make no mention of firm/ designer name.**

**4 - Image Submission:** 20-page maximum, PDF format. This 20 page limit is inclusive of title slide, project narrative and all graphics.

**Note:** Exceptions to slide limit for Rotating Category

**Note:** PPT and INDD slide templates are available (and preferred!) for the image submission. See below.

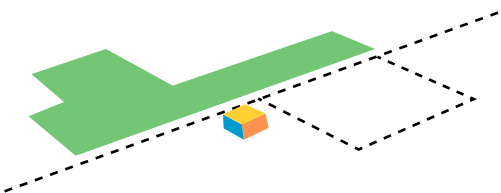
Slide 1- Title slide with project title and location, no image, photo nor graphics allowed.

Slide 2- Project narrative summary: limit to one slide. May include full Project Narrative as described above or may be summarized to fit on slide. No images, photos or graphics are allowed on this slide.

# Professional Awards

## Professional, Student & Non-Juried Awards

*St. Louis Chapter of the American Society of Landscape Architects*





# Submission Elements

*Continued*

Slides 3-20- Graphic Slides: limit to one image, photo or graphic per slide. Diagrams may be comprised of multiple images but legibility is paramount. Description of image is allowed on bottom of slide, 40 word maximum, 12 pt. font minimum.

At a minimum, the following images are recommended, as applicable:

One full site design plan (required to be the 3rd slide)

One existing/pre-proposal conditions photograph

# Submission Format

Slides/narratives must be submitted in a digital PDF file. The graphic material supplied will be used to represent the project in Chapter publications, the Awards Ceremony and Chapter website. Please take care to submit quality graphic material and photographs that are in-focus, crisp, and well-cropped.

A .PPT and .INDD template will be provided in a digital-share file. You may use alternate preparation software, but must follow the template and specifications of the provided files, also summarized below:

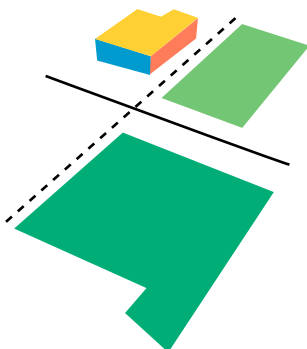
Tabloid Ratio Layout, Landscape Orientation

Tabloid Ratio: 279 x 432 mm 11.0 x 17.0 in 1:1.5455

White Background

Black San-Serif Text and Titles

**Note:** PPT and INDD Slide templates are available (and preferred!) for the Image Submission.



# Professional Awards

---

Professional, Student &  
Non-Juried Awards

*St. Louis Chapter of the American Society of Landscape Architects*

# Professional Submission Categories

## Category 1 Design: Constructed Projects

- 1A - Over \$500,000 Construction Budget
- 1B - Under \$500,000 Construction Budget

Recognizes site-specific works of landscape architecture within the sub-categories listed below. This category is for built works in landscape architectural design. For large incremental projects, at least the first stage of construction must be completed to be eligible for an award.

Typical entries include: public, institutional, or private landscapes of all kinds (except residential), green roofs, stormwater management, sustainable design, transportation / infrastructure design, commercial, institutional, parks, recreation, trails, and open space, urban design, memorial, corporate, landscape art or installation, interior landscape design, and more.

## Category 2 Design: Unrealized Projects

Recognizes excellence in design thinking and methodology for site-scale projects for which implementation will not occur.

If the project may or has moved into construction, but will be significantly different than designed upon implementation, Entrants may choose to describe their reasoning for selecting the Design - Unrealized Projects category within the Project Narrative. These special circumstances will be reviewed on an individual basis and it will be at the discretion of the Awards Committee to allow or deny entry under this category.

Typical Entries Include: Competition entries, schematic design packages, in-office design charrettes, ideation projects, RFQ conceptual sketches, and more.

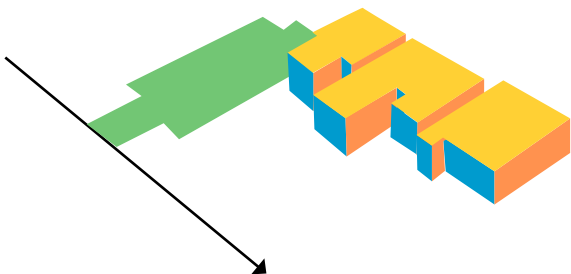
**Note:** Submissions in Category 2 may not be submitted in future years in other categories. As such, if the project will not progress (in any form!) then please submit! If it will progress, just in a lesser or different manner than planned, consider submitting in Category 1 with a clear description of variance from plan.

# Professional Awards

---

Professional, Student &  
Non-Juried Awards

*St. Louis Chapter of the American Society of Landscape Architects*



# Professional Submission Categories

*Continued*

## Category 3 Analysis, Planning, Research and Communications

Recognizes the activities of landscape architecture professionals which lead to, guide or evaluate future landscape architectural design, including development plans, government policies, programs and legislature, environmental analysis and various landscape analysis activities.

Typical Entries Include: Planning efforts, development guidelines, transportation, town or campus planning, plans for recovery or reclamation, interpretive design, exhibition design, studies of landscape architecture and law, education, health and safety, or policy, and more.

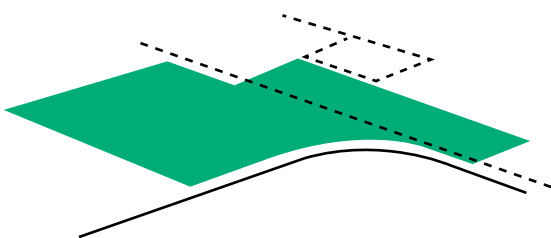
**Note:** Submissions in Category 3 may include a .pdf file or link to the full document, communication strategy, video, website, etc. Necessary designer anonymity requirements pertain to full documents submitted, as well.

## Professional Awards

---

Professional, Student &  
Non-Juried Awards

*St. Louis Chapter of the American Society of Landscape Architects*



# Professional Submission Categories

*Continued*

## Category 4 Rotating Category: The Power of Play

Each year, the Rotating Category Award will recognize categories that are important to our profession but may be overlooked because of other more “glamorous” project types. Past Categories have included Art and Landscape Architecture, Graphic Representation, Equity, Inclusion and Diversity, Creativity in Engagement, and Residential. This year’s category is:

**The Power of Play** Playful landscapes can be defined as play spaces that offer a wide range of open-ended play options and allow people to be creative and use their imagination both in design and play. Whether the project featured a large budget for play-specific structures or deployed other landscape strategies to present itself playfully, these spaces are made for FUN!

Potential entries include parks, playgrounds, ballfields, water play elements, mounded play spaces, nature play, playful engagement techniques, etc.

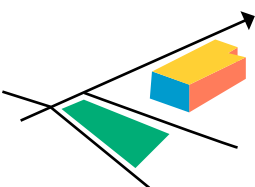
### Rotating Category Requirements:

- Work must have been completed and realized in the last 7 years
- Work submitted in this category may represent elements or aspects of project work submitted in other categories or having been submitted in previous years. If an Entrant is successful in this Rotating Category, they **may** submit the full project in future years in other categories as appropriate.
- Submission guidelines as outlined above are applicable to this category, but there is a 10 slide maximum. Slides 1 and 2 should be followed as described above.
- Entries by playground product representatives or vendors are not acceptable. Contact Awards Chair for further discussion if you have any questions about eligibility!

# Professional Awards

## Professional, Student & Non-Juried Awards

*St. Louis Chapter of the American Society of Landscape Architects*



# Project Information

**Project Name:** \_\_\_\_\_  
**Project Location:** \_\_\_\_\_  
**Client:** \_\_\_\_\_  
**Project Collaborators / Role:** \_\_\_\_\_  
\_\_\_\_\_

*Ensure proper credit is provided to the project's team, collaborators, clients, stakeholders, public agencies, etc. and/or other prior design affiliates that may have been involved in the project's evolution.*

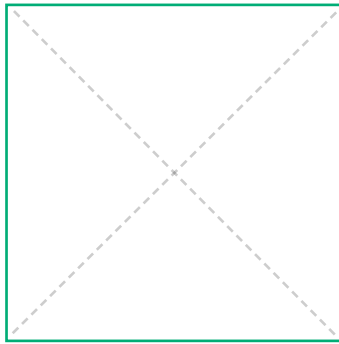
# Entry Category

- Category 1 Design: Constructed Projects**  
1A - Over \$500,000 Construction Budget  
1B - Under \$500,000 Construction Budget
- Category 2 Design: Unrealized Projects**
- Category 3 Analysis, Planning, Research & Communications**
- Category 4 Rotating Category: The Power of Play**

# Entrant Information

**Entrant Name:** \_\_\_\_\_  
**Firm / Entity Name:** \_\_\_\_\_  
**Phone Number:** \_\_\_\_\_  
**Email:** \_\_\_\_\_

*Entrant  
Professional  
LA Seal:*



*Signature*  
*As the Entrant to the ASLA St. Louis Chapter Awards Program, I affirm to the best of my knowledge that the information contained in this submittal is true and factual.*

## Submission Double-Check:

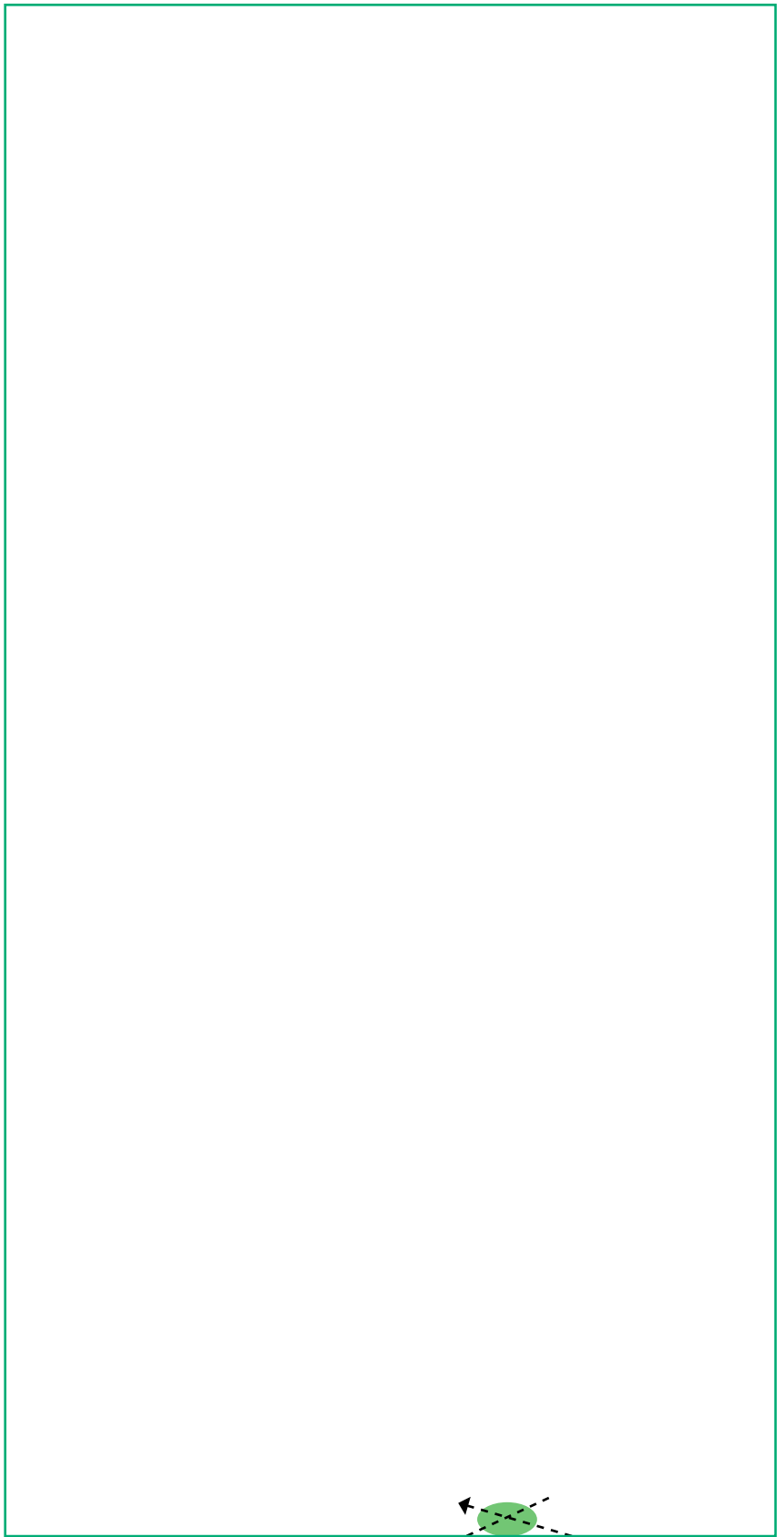
- Entry Form Complete / Upload Link Received
- Awards Script
- Project Narrative (No firm names!)
- Image Submission (Single PDF, Use Template)
- Upload to Link
- Payment Submitted

## For entries to be considered:

- >>Completed Entry Forms must be completed and emailed to [stlouisaslaawards@gmail.com](mailto:stlouisaslaawards@gmail.com) before **5:00 p.m., NOVEMBER 20th, 2023**. A digital upload link will be sent upon receipt of completed entry form.
- >>All materials must be submitted via digital upload by **5:00 p.m., DECEMBER 1st, 2023**. Payments are due at time of material submission
- >>As ALWAYS, early submission is preferred! Awards Chair will confirm all elements are present and accounted for and give you another chance if items are absent!
- Questions?** Email Michelle Ohle: [stlouisaslaawards@gmail.com](mailto:stlouisaslaawards@gmail.com)



# Professional, Student & Non-Juried Awards Entry Form



The Award Script Description should be a written summary (200 word maximum) to be used during the Awards Presentation and for future marketing publications.

**Note:** This will not be judged as part of the award submission. Entry designer anonymity is not necessary in the marketing description since this information will not be shared with the Awards Jury. The Award Script Description is NOT required for Student Entries.

# **Professional Awards Script** Professional, Student & Non-Juried Awards

*St. Louis Chapter of the American Society of Landscape Architects*



Entries should include a written text (750 word maximum) to describe the following elements:

- **Project identification**
- **Project purpose**
- **Role of the landscape architect**
- **Local significance**
- **Special factors**

The Project Narrative should be submitted in PDF format as well as included on the second page of the Image Submission slideshow.

**Note:** The project narrative as described above **should make no mention of firm/ designer name.**

*Attach Extra Pages as Necessary*

# **Professional Project Narrative** Professional, Student & Non-Juried Awards



# 2023-2024 Call for Awards

Professional, Student &  
Non-Juried Awards

*St. Louis Chapter of the American Society of Landscape Architects*





# Student Awards

## 2023-2024 Call for Awards

Student work serves to inspire, drive, and irrevocably change and evolve the profession of Landscape Architecture. Professional engagement with students through studio, internships, and organization activities assists both students and practitioners – we all learn from each other. To recognize the immense quantity and excellent quality of Student Work, the St. Louis Chapter of the American Society of Landscape Architects seeks to recognize excellence in student work through our annual call for Student Award submissions.

When students submit work for award consideration, a diverse team of local practitioners reviews and juries the submissions in order to deepen the connection between students and professionals. Students look to gain exposure and recognition from the very professionals who may someday be their peers and employers.

Please reach out directly for necessary clarifications or with any questions.  
Good luck!

Sincerely,



Michelle Ohle, ASLA Awards Chair | [stlouisaslaawards@gmail.com](mailto:stlouisaslaawards@gmail.com)

## Professional, Student & Non-Juried Awards

*St. Louis Chapter of the American Society of Landscape Architects*



# Eligibility

Eligible entries include:

Any project that focuses on an area within the geographic region of the St. Louis ASLA Chapter

Any project submitted by a student who originates from, resides in, or attends school within the St. Louis ASLA Chapter boundaries

Eligible Student Entrants include individual and team projects.

Only currently-enrolled students or those who graduated within the calendar year are eligible.

Any work submitted must have been completed within the calendar year to be eligible.

Projects must represent original student work completed in the pursuit of a degree in landscape architecture from an accredited university program or one currently seeking accreditation.

# Timeline

For STUDENT entries to be considered:

Entry Forms must be submitted to [stlouisaslaawards@gmail.com](mailto:stlouisaslaawards@gmail.com) by **5:00 p.m., NOVEMBER 20th, 2023.**

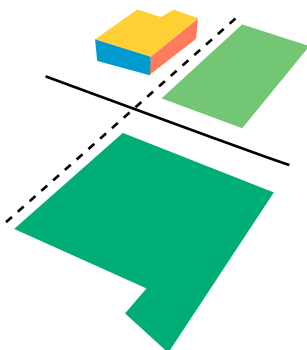
A Digital Upload Link will be sent to those who have completed Entry Forms.

All materials must be submitted via digital upload on or before **5:00 p.m., DECEMBER 1st, 2023.**

Payment is due PRIOR to Final Submission Deadline.

Successful entrants will be notified about **January 8th, 2024.**

Awards event is tentatively planned for **February 3rd, 2024.**  
Mark your calendars!



# Student Awards

---

## Professional, Student & Non-Juried Awards

*St. Louis Chapter of the American Society of Landscape Architects*

# Submission Rules and Good Practice

**Obtain Professor Authorization** Entrants should review their submissions with their professors or representatives of the school. Representative signatures are required on the Student Entry Form. This review and authorization ensures a high-quality of submission and mirrors professional practice where final reviews are critical to project success. It is recommended to have a peer, professor or colleague review your image submission and project narrative prior to submission.

**Collaborator Credit** Student work is rarely done in a bubble by oneself. It is important that Student Entrants shall take full responsibility for ensuring proper credit is provided for partners, advisors and other design affiliates.

**Note:** St. Louis ASLA encourages ample and generous credit to all engaged on project work. Landscape Architecture is, innately, a profession of partnership.

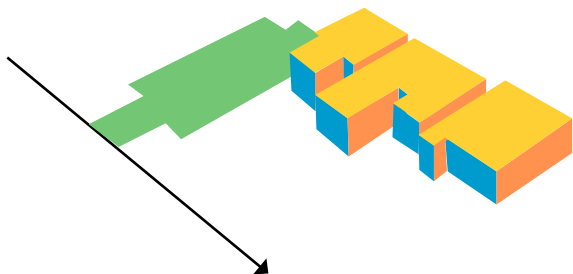
**Image Quality** Entrants are responsible for managing file size and image quality to ensure beautiful reproduction and file transmission. The quality of the images is critical for a positive Jury review of Student Submissions.

**Note:** The biggest challenge for student entrants is often file size management. The submission file should be:

Images - one (1) PDF file, under 50 MB

Project Narrative - one (1) PDF file, under 1 MB

**Designer Anonymity** To ensure impartiality, delete all references to Entrant identity from all text and images. Submittals not meeting anonymity requirements shall be rejected at the discretion of the ExComm. Pay specific attention to boards, reports, slides, engagement photos, etc.



## Student Awards

---

### Professional, Student & Non-Juried Awards

*St. Louis Chapter of the American Society of Landscape Architects*

# Submission Rules and Good Practice

**Obtain Professor Authorization:** Entrants should review their submissions with their professors or representatives of the school. Representative signatures are required on the Student Entry Form. This review and authorization ensures a high-quality of submission and mirrors professional practice where final reviews are critical to project success. It is recommended to have a peer, professor or colleague review your image submission and project narrative prior to submission.

**Collaborator Credit** Student work is rarely done in a bubble by oneself. It is important that Student Entrants shall take full responsibility for ensuring proper credit is provided for partners, advisors and other design affiliates.

Note: St. Louis ASLA encourages ample and generous credit to all engaged on project work. Landscape Architecture is, innately, a profession of partnership.

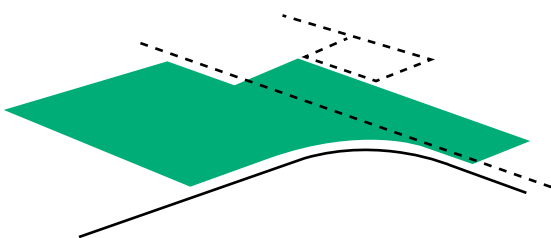
**Image Quality** Entrants are responsible for managing file size and image quality to ensure beautiful reproduction and file transmission. The quality of the images is critical for a positive Jury review of Student Submissions.

**Note:** The biggest challenge for student entrants is often file size management. The submission file should be:

Images - one (1) PDF file, under 50 MB

Project Narrative - one (1) PDF file, under 1 MB

**Designer Anonymity:** To ensure impartiality, delete all references to entrant identity from all text and images. Submittals not meeting anonymity requirements shall be rejected at the discretion of the ExComm. Pay specific attention to boards, reports, slides, engagement photos, etc.



## Student Awards

---

### Professional, Student & Non-Juried Awards

*St. Louis Chapter of the American Society of Landscape Architects*

# Submission Elements

In an effort to help expedite the production of the St. Louis Chapter ASLA Awards brochure and presentation, the following guidelines must be met for all submittals. Failure to follow the format guidelines will result in disqualification.

**1 - Entry Form:** The completed Entry Form must be signed by the entrant and the representative professor. Contact information for Entrant must be complete and legible. By signature, the entrant affirms that the information contained in the entry form and submission is true and factual. Student Entries should use the Student Entry Form, not the Professional Entry form.

**2 - Project Narrative:** Entries should include a written text (750 word maximum) to describe the following elements-

**Project identification** - Include project title, location, and course title.

**Project intent**- Describe the project's requirements, scope, planning or design philosophy, and design intent.

**Context and Appropriateness to Site** - Explain the project's effect on adjacent sites and affect by regional context. Describe the relationships, particularly in regards to the profession's stewardship responsibilities.

**Innovation and Expansion** - Describe new areas of study that were undertaken as a part of the completion of this project. Outline significance of research, engagement, or new techniques developed.

**Special factors** - Explain why the project is unique, plus any unusual problems encountered.

Submittals with vague or inadequate information on the role of the landscape architect/designer will be ruled ineligible.

The Project Narrative should be submitted in PDF format (see forms) as well as included on the second page of the Image Submission slideshow. It is due at the time of submission materials, NOT with Entry Form.

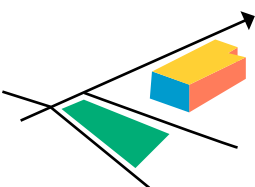
**Note: The Project Narrative as described above should make no mention of student / designer name.**

## Student Awards

---

### Professional, Student & Non-Juried Awards

*St. Louis Chapter of the American Society of Landscape Architects*

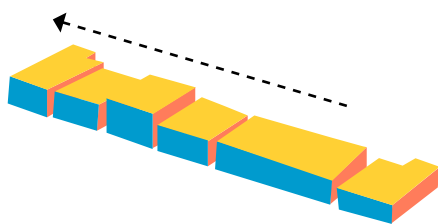


# Entry Fee

Student Entry Fee: \$20

Payment is due prior to the Submission on the Deadline stated below. Final Payment Procedures will be developed and shared with entrants directly in the coming weeks. Entry Forms are due in order to receive the Digital Upload Link.

**Note:** Financial assistance is available! If you require financial assistance, email Awards Chair, Michelle Ohle, for more information.



# Student Awards

---

Professional, Student &  
Non-Juried Awards

*St. Louis Chapter of the American Society of Landscape Architects*

# Project Information

**Project Name:** -----

**Project Location:** -----

**Project Collaborators / Role:** -----

*Ensure proper credit is provided to the project's team, collaborators, clients, stakeholders, public agencies, etc. and/or other prior design affiliates that may have been involved in the project's evolution.*

**Course Title:** -----

**Professor:** -----

**Professor Email / Phone:** -----

---

*Signature*

*As the School Representative / Professor for the Student Work submitted, I affirm, to the best of my knowledge, that the information contained in this submittal is true and factual.*

# Entrant Information

**Entrant Name:** -----

**School Name:** -----

**Phone Number:** -----

**Email:** -----

---

*Signature*

*As the Entrant to the ASLA St. Louis Chapter Awards Program, I affirm to the best of my knowledge that the information contained in this submittal is true and factual.*

**Check Here** if this is a class-wide submission entered by a Professor or School Representative

## Submission Double-Check:

Entry Form Complete /  
Upload Link Received

Project Narrative (No identifying names!)

Image Submission  
(Single PDF, Use Template)

Upload to Link

Payment Submitted

## For entries to be considered:

>>Completed Entry Forms must be completed and emailed to [stlouisaslaawards@gmail.com](mailto:stlouisaslaawards@gmail.com) before **5:00 p.m., NOVEMBER 20th, 2023**. A digital upload link will be sent upon receipt of completed entry form.

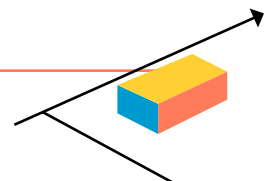
>>All materials must be submitted via digital upload by **5:00 p.m., DECEMBER 1st, 2023**. Payments are due at time of material submission

>>As ALWAYS, early submission is preferred! Awards Chair will confirm all elements are present and accounted for and give you another chance if items are absent!

**Questions?** Email Michelle Ohle: [stlouisaslaawards@gmail.com](mailto:stlouisaslaawards@gmail.com)

---

# Student Professional, Student & Entry Form Non-Juried Awards



St. Louis Chapter of the American Society of Landscape Architects



Entries should include a written text (750 word maximum) to describe the following elements:

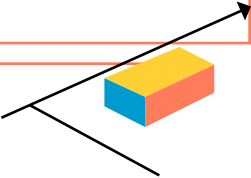
- **Project identification**
- **Project intent**
- **Context and appropriateness to site**
- **Innovation and expansion**
- **Special factors**

The Project Narrative should be submitted in PDF format as well as included on the second page of the Image Submission slideshow.

**Note:** The project narrative as described above **should make no mention of entrant / designer name.**

*Attach Extra Pages as Necessary*

# **Student Professional, Student & Non-Juried Awards**







# 2023-2024 Call for Awards

Professional, Student &  
Non-Juried Awards

*St. Louis Chapter of the American Society of Landscape Architects*



# Non-Juried Awards

## 2023-2024 Call for Awards

Each year, the St. Louis Chapter of ASLA recognizes individuals or organizations that have significantly enhanced the regional landscape or promoted the profession of landscape architecture in the St. Louis area. These awards are given in an effort to heighten public appreciation of landscape-related issues and to expand public awareness of the landscape architecture profession and the American Society of Landscape Architects.

Upon nomination, the St. Louis ExComm will review and either self-jury or assign a subcommittee to select award recipients. Quantity of recipients and categories recognized are at the discretion of the ExComm. Nominations may be resubmitted annually for reconsideration if not recognized with an award.

To ask a question or submit a nomination for one of the non-juried awards, please email the required documents to Awards Event Chair, at [stlouisaslaawards@gmail.com](mailto:stlouisaslaawards@gmail.com) by December 4th, 2023.

### Nomination Guidelines

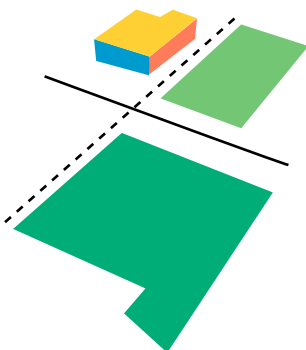
Membership in St. Louis ASLA is not required for Nominees. There is no entry fee required for the Non-Juried Awards. Nominees may be entered for consideration in one of the following ways:

- Members of the St. Louis ASLA may nominate
- Members of allied organizations may nominate
- Any individual or organization may self-nominate

### Nomination Format

One page (8.5"x11") nomination letter  
Optional letters of support (8.5"x11")

**Note:** Press releases, newsletter articles, magazine features and Award presentation will be written with the information provided on the nomination description. Please be thorough and accurate!



# Non-Juried Awards

## Professional, Student & Non-Juried Awards

*St. Louis Chapter of the American Society of Landscape Architects*

# Robert Goetz Award

The Robert Goetz Award acknowledges a Chapter member's professional career and contributions to the profession of landscape architecture. Service to the St. Louis Chapter and ASLA in the form of involvement, Executive Committee service and leadership positions are also acknowledged. The award is for experienced landscape architects with 25+ years of experience and in good standing with the Chapter, ASLA and the State of Missouri licensure board.

A founding member of the ASLA St. Louis Chapter in 1956, Robert (Bob) Goetz was a long-standing practitioner in the St. Louis Area. Bob was known for his strong character, stewardship of the built environment in his practice and community leadership. A highly respected professional, Bob earned the trust and confidence of allied professions throughout his career, which helped to establish the profession of landscape architecture in St. Louis in the 1960's and 70's.

Award nominees should exhibit many of Bob's traits, including:

- Robust work-ethic
- Principled stewardship
- Mentorship and willingness to share
- Advocacy for the Profession
- Understated impact on the profession regionally

## Past Award Recipients

Gerald (Rusty) Saunders - 2022

Sue Wiest - 2021

Noel Fehr - 2016

Bob Belden - 2013

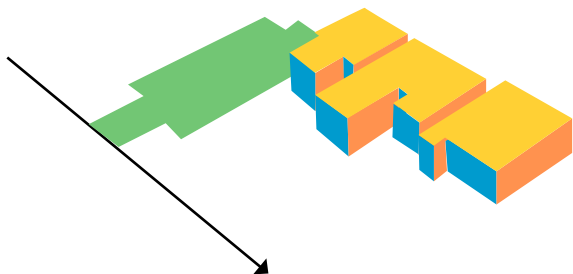
Ted Spaid - 2012

Randy Mardis - 2008

Rick Kacenski - 2006

Eldridge Lovelace - 2005

Robert Goetz - 2004



# Non-Juried Awards

## Professional, Student & Non-Juried Awards

*St. Louis Chapter of the American Society of Landscape Architects*

# Civic Stewardship Award

The Civic Stewardship Award acknowledges the contributions of public agencies, institutions, not-for-profits and individuals who have exhibited stewardship of the natural resources, communities, landscapes and built environment of the St. Louis region.

## Past Award Recipients

Forest ReLeaf - 2022

David Newburger, Commissioner on the Disabled and ADA Coordinator, City of St. Louis; Founder and Co-Director, Starkloff Disability Institute - 2021

Horticulture Program at St. Louis Community College - Meramec - 2020

Facilities, Planning and Management Department at Washington University in St. Louis - 2020

Project Clear, St Louis Metropolitan Sewer District - 2019

Missouri Association of Landscape Architects (MALA) - 2019

Great Streets Initiative at East-West Gateway Council of Governments - 2018

Mark Ohlendorf, St Louis County Parks Foundation - 2018

Kirkwood Parks and Recreation - 2017

Michael Allen, Preservation Research Office - 2017

Jay Doty - 2016

Mary Ostafi, Urban Harvest - 2015

Earth Dance Farms - 2014

Scott Woodbury, Shaw Nature Reserve - 2014

Walter Metcalfe - 2013

St. Louis Design Week, ALGA St. Louis - 2013

Deer Creek Watershed Alliance - 2012

Municipal Park Grant Commission of St. Louis County - 2012

Washington University Medical Center - 2011

Live Well Ferguson - 2011

Lafayette Park Conservancy - 2010

Old North St. Louis Restoration Group - 2010

Trailnet - 2009

FOCUS St. Louis - 2008

Missouri Prairie Foundation - 2006

Christy Fox, Gateway Foundation - 2006

Open Space Council, Ron Coleman - 2005

Gateway Greening - 2005

Tower Grove Park, John Kahrel - 2004

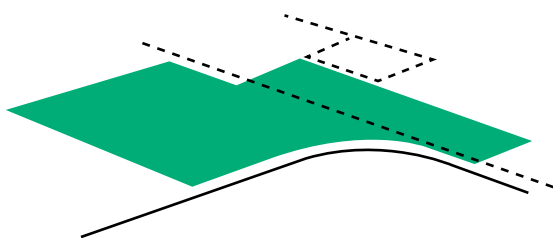
Esley Hamilton, St. Louis County Parks Historian - 2004

Great Rivers Greenway District - 2003

Forest Park Forever, Jim Mann - 2002

Charlie Brennan, Rediscover Downtown St. Louis Walking Tour - 2001

Gateway Foundation, Christy Fox - 2001



## Non-Juried Awards

### Professional, Student & Non-Juried Awards

*St. Louis Chapter of the American Society of Landscape Architects*

# Emerging Professional Award

The Emerging Professional Award acknowledges the contributions to the St. Louis Chapter and the profession of landscape architecture. St. Louis Chapter involvement, participation, and Executive Committee positions will be considered. Nominees must be members of the Chapter and have less than 10 years of experience in the field.

Additional contributions could include the following:

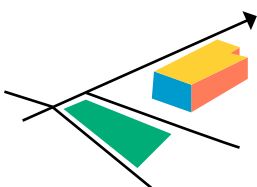
- Representing the profession, through service on public agency boards (planning commissions, architectural review boards, etc)
- Teaching knowledge of the profession at higher education facilities.
- Presenting knowledge of the profession at society conferences, seminars and tours.
- Involvement in community initiatives and organizations.

## Past Award Recipients

Frank Hu - 2022

Adam Bachtel - 2017

Michelle Ohle - 2016



# Non-Juried Awards

---

Professional, Student &  
Non-Juried Awards

*St. Louis Chapter of the American Society of Landscape Architects*

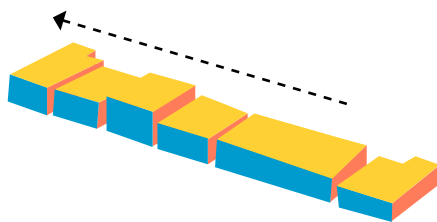
# Landmark Design Award

The Landmark Design Award acknowledges a built environment, within the St. Louis Chapter geographical boundaries, which has made a significant contribution to its community over a 25-year or greater time period. The built environment may include parks, streets, districts, plazas, campuses, gardens, etc. The built environment must have been designed / or managed / or maintained by a landscape architect from the St. Louis Chapter.

Additional Submittal Requirements: Graphic images (maximum of 10)

## Past Award Recipient

Tower Grove Park - 2017



# Non-Juried Awards

---

Professional, Student &  
Non-Juried Awards

*St. Louis Chapter of the American Society of Landscape Architects*